



Nozomi 14000 AQ

Water-based, Single-pass Inkjet Technology
for Corrugated Packaging and Displays

Get ready to make waves



Disrupt the status quo with true water-based, single-pass digital inkjet printing

Make waves in your market with a true water-based, single-pass digital inkjet printer for high-resolution printing on corrugated. The EFI™ Nozomi 14000 AQ printing system for corrugated packaging is here – and it offers four key business-building advantages:

- 1 Extra flexibility to print colorful, high-quality images
- 2 Digital efficiencies to produce shorter runs and customized jobs at lower costs
- 3 Industrial speeds for more capacity so you can respond to customers faster and deliver jobs with short turnarounds
- 4 EFI Genuine Water-based Inks that are compliant with the European Printing Ink Association (EuPIA), Swiss Ordinance RS817.023.21, and Nestlé Guidance Note & European directives on packaging inks



Be brilliant with water-based technology from EFI

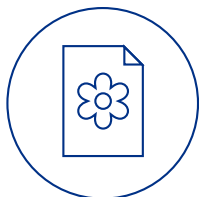
The Nozomi 14000 AQ printer is EFI's third generation single-pass industrial inkjet printer for corrugated. Our worldwide installed base in the packaging and sign and display industries speaks to the proven results and profitability you can expect from EFI Nozomi technology.



High productivity and maximum efficiency

The Nozomi 14000 AQ printer features a robust design for heavy industrial use with high reliability and productivity:

- Print speeds up to 328 linear ft/min (100 linear m/min)
- Ability to handle boards from F flute, double wall, and up to triple wall
- High-force hold-down transport along with Edge Hold Down device
- No stop in production due to damaged boards
- Non-clogging, high-performing printheads that don't need to be changed frequently
- Ultra-fast drying technology with smart drying feature
- Designed for easy serviceability, operation, and maintenance
- Powerful image management and data collection software
- Intuitive, user-friendly interface



High-quality graphics printing

The Nozomi 14000 AQ printer is the most efficient way to produce superior printed packaging that will enhance shopping and consumer experiences:

- 1200 dpi apparent resolution
- The latest printhead technology fully water-compatible with longer lifespan
- Tools based on our artificial vision system that control print quality
- Fiery® digital front-end (DFE) software that drives the printer with advanced imaging technology
- FOGRA 39 standard



True water-based inkjet technology

The Nozomi 14000 AQ printer features water-based inks with no UV reactive chemistries:

- Compliant with the Framework Regulation (EC) No 1935/2004
- GMP (Good Manufacturing Process) compliant as spelled out in Regulation (EC) No 2023/2006
- Swiss printing ink ordinance SR 817.023.21 compliant and will meet specific migration limits spelled out in the ordinance
- Compliant with the Nestlé exclusion list
- EuPIA compliant (European Printing Ink Association) exclusion list
- Water-based primer specifically designed to control ink drop dispersion and enhance the performance of EFI Nozomi inks

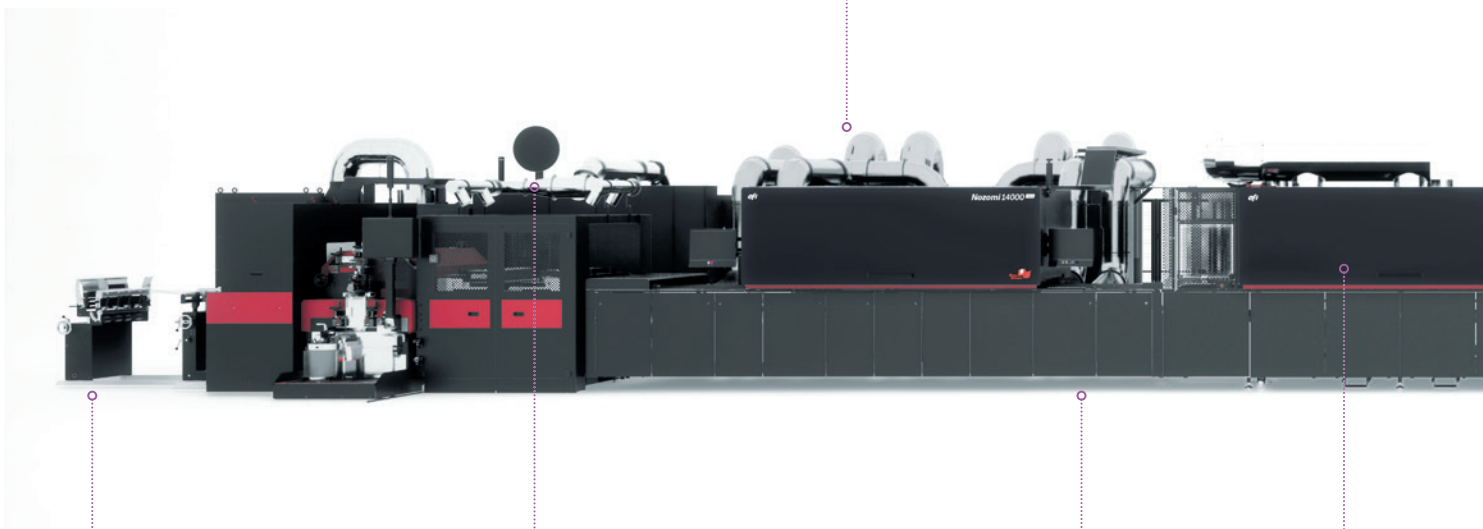
End-to-end water-based, single-pass digital inkjet printing

MEDIA HANDLING

- Max. board/sheet size (W x L):
 - 55.12 in x 94.49 in (140 cm x 240 cm) for configurations using bundle stacker
 - 55.12 in x 118.11 in (140 cm x 300 cm) for configurations using full stacker
- Min. board size: 17.71 in x 17.71 in (45 cm x 45 cm)
- Adjustable printing gap
- Board thickness range: 0.03-0.47 in (0.8-12 mm)

PRINTER

- Max print width: 4.6 ft (1,4 m)
- Productivity: Up to 328 linear ft/min (100 linear m/min)
- Resolution: 600 dpi native; apparent resolution: 1200 dpi
- Four-level grayscale
- Vacuum integrated transport
- Ink configuration: OV CMYK
- Edge Hold Down device
- User friendly UI



FEEDER

- Non-stop bottom feeder
- Suitable for F flute to double and triple wall corrugated boards
- Optional dual-lane printing

ROLLER COATER

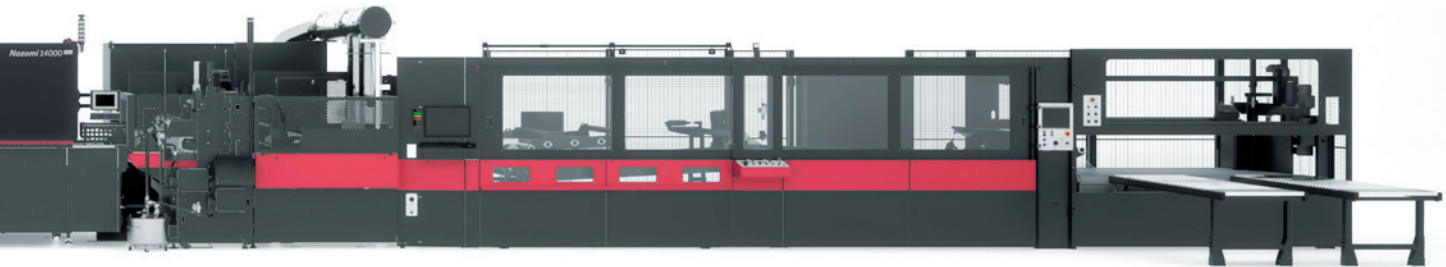
- Water-primer IR (infrared) drying
- Change amount of primer applied on the fly

DRYER

- Energy usage optimized
- Short layout
- Vacuum transport
- Dynamic drying control

VARNISH

Water-varnish IR (infrared) drying



STACKER

- Full stacker:
 - Stack height: Max. 71 in (1800 mm) limited small sizes; Min. 39 in (1000 mm) in production
 - Stack squaring: +/- 0.8 in (20 mm) good quality boards
 - Reject available
- Bundle stacker:
 - Max. bundle height: 7.87 in (20 cm)
 - Reject available

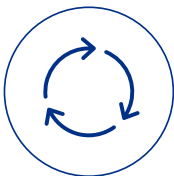
Value-added training and services working for you

Add EFI comprehensive professional services and reliable support, and you can rest assured that we'll be there every step of the way to help you successfully add digital capabilities to your plant.



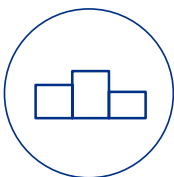
Ramp-up program

This 12-week program is designed to accelerate the learning curve and increase operator confidence with three weeks of hands-on operator and maintenance training plus nine weeks of onsite mentoring as you reach steady production.



Three keys of extended follow-up

With a focused goal of total machine stability, our extended follow-up is focused on three key areas: production monitoring, training, and maintenance. A senior field service engineer (FSE) works with you onsite for three months, and you're fully supported 24/7 by our remote support team.



Maintenance service

We offer different maintenance agreements levels based on production volumes for you to choose from to maintain optimal print quality, machine stability and reinforce technical training. The maintenance programs include routine procedures and best practices to ensure optimum condition of all components and to avoid unforeseen downtime.



Smart support

Remote training and support enhanced with augmented reality for real-time, see-what-I-see communication and faster time to resolution.

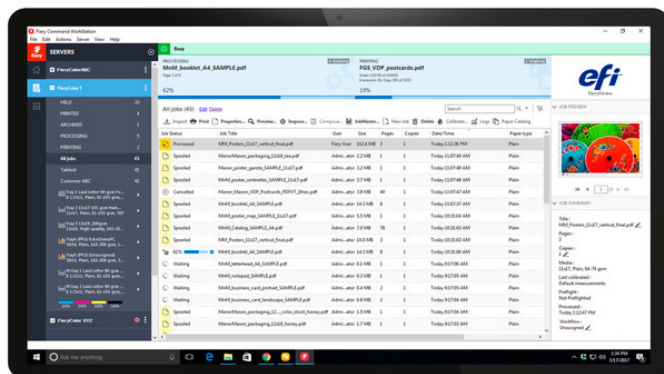
Fiery technology – the world leader in digital front end innovation



EFI Fiery digital front ends (DFEs) are the industry standard and the most popular choice across multiple print environments. To succeed in today's highly competitive market, it is critical to have a DFE with integrated workflow and color management to achieve higher operational efficiency and output quality. The Fiery NZ-1000 DFE provides outstanding image and color quality with features to make your print results truly exceptional.

Fiery technology delivers:

- Advanced color management and extensive toolset for late-stage image editing
- Exceptional print and color quality for complex, graphically rich content
- Stunning out-of-the-box color with the smoothest color blends, maximum shadow detail, and superb image definition
- Accurate reproduction of brand colors plus color matching for consistent print results
- Efficient job management with easy handling of short runs and versioned or variable data printing jobs
- Full visibility into your production with accurate ink estimates and reporting of the actual ink used in print
- Advanced bladed hardware architecture with the processing power to ensure the highest throughput



Centralize print production control with Fiery Command WorkStation's intuitive job management interface

Let's be brilliant. Together.

We understand you want breakthrough technologies to lead you through your digital journey. That's why we're passionate about driving your business growth with a scalable portfolio of products, solutions, services, support, and world-class partnerships for the manufacturing of signage, packaging, textiles, ceramic tiles, and building materials with a wide range of printers and inks. Our unwavering commitment is to increase your profits, cut costs, improve productivity, and optimize efficiency — job after job, year after year. We're obsessed with your success. And we definitely believe we have the right people, technology and experience to help your business achieve its goals. Visit www.efi.com or send an email to info@efi.com for more information.



Nothing herein should be construed as a warranty in addition to the express warranty statement provided with EFI products and services.

BDR, Cretachrom, Cretaprint, the Cretaprint Logo, Cretaprinter, Cretaroller, Divisional Graphics, Distancing Graphics, EFI, the EFI logo, Electronics For Imaging, FabriVU, Fast-4, Inèdit, Inkintensity, Inkware, neoCatalog, neoStampa, neoTextil, PressVu, ProGraphics, Rialco, Riaplas, SDC, SafeGuard Graphics, UltraDrop, UltraPress, UltraTex, UltraVu, UV Series 50, VUTEK, and the VUTEK logo are trademarks or registered trademarks of Electronics For Imaging, Inc. and/or its wholly owned subsidiaries in the U.S. and/or certain other countries.

All other terms and product names may be trademarks or registered trademarks of their respective owners and are hereby acknowledged.